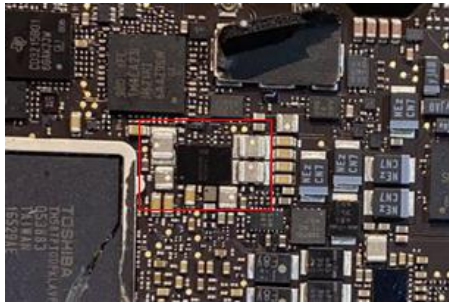
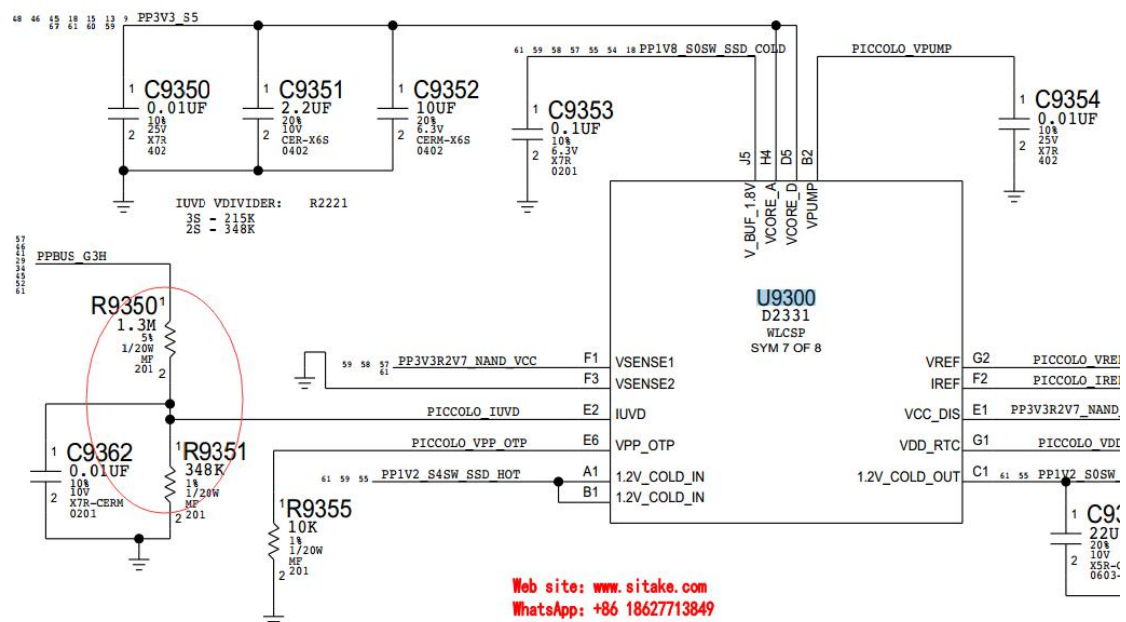


MacBook A1534 as an example, 100% data protection and hard disk replacement (1) Hard drive repair is not recognized



Measure whether the inductor voltage and ground resistance here are normal.

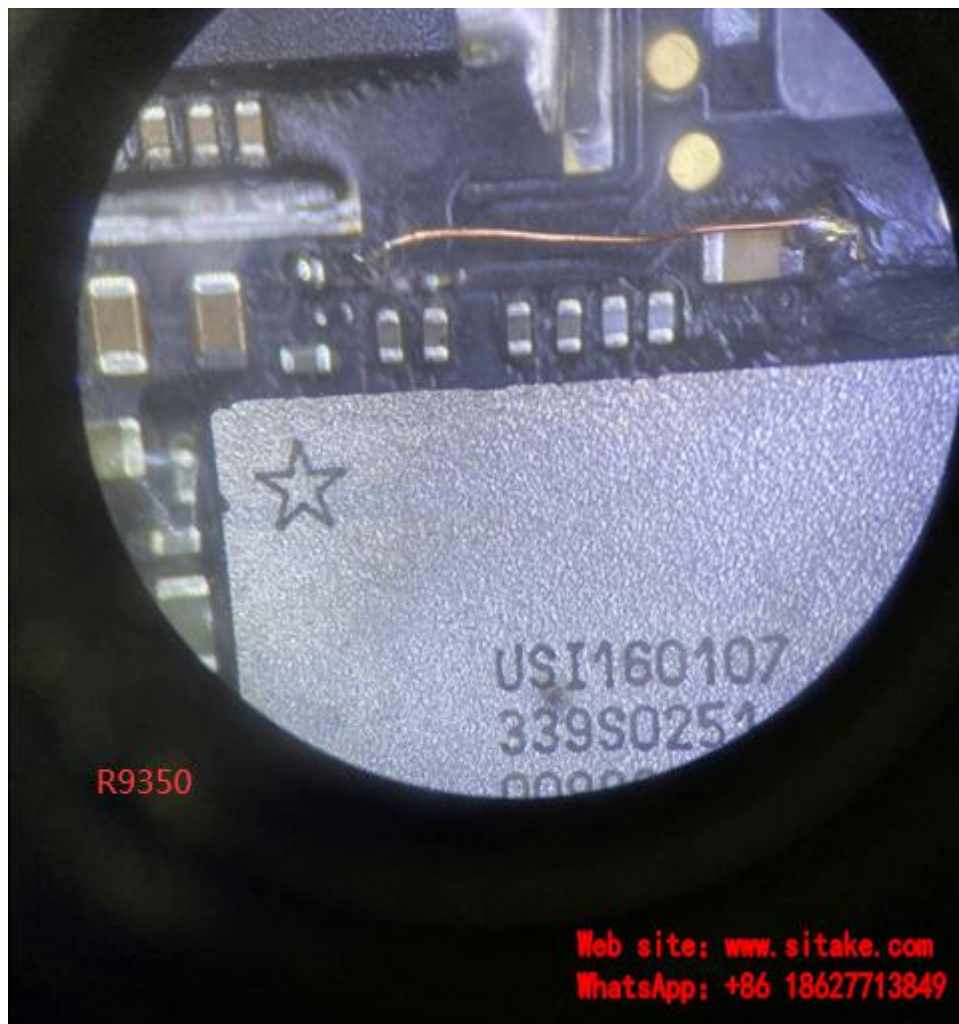
If there is resistance value, but there is no power supply, repair the voltage divider circuit here:



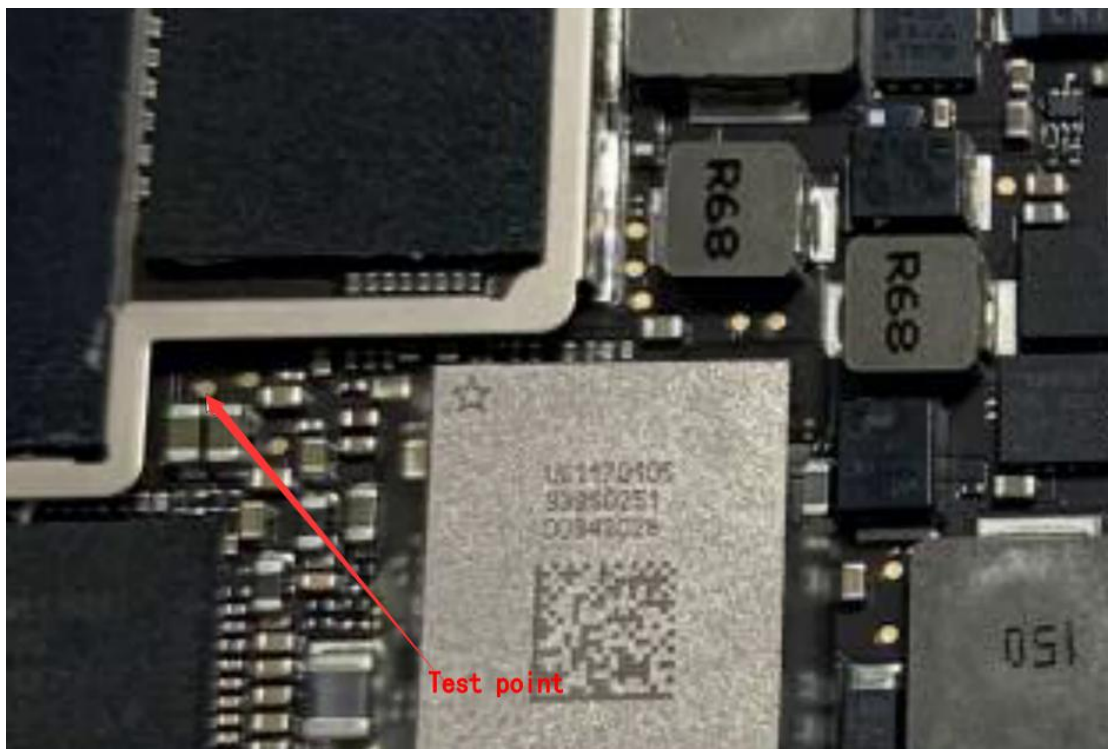
E2 pin 1.7V partial voltage is normal.

This fault, 2016-2017 MacBook A1534 after the water, as long as there is water here, 100% break line.

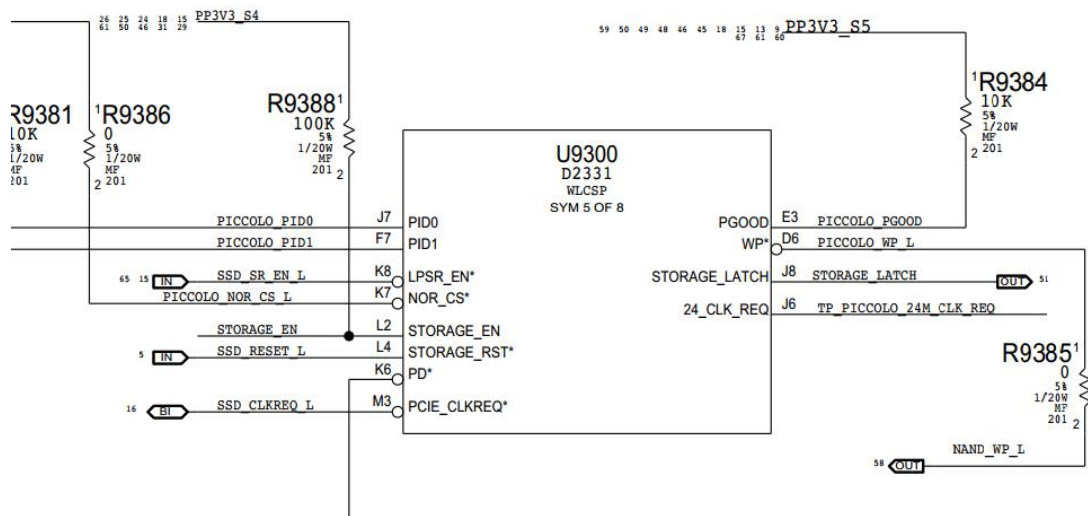
The flying wire connection can be repaired.



If the partial voltage 1.7V is normal, check the en signal

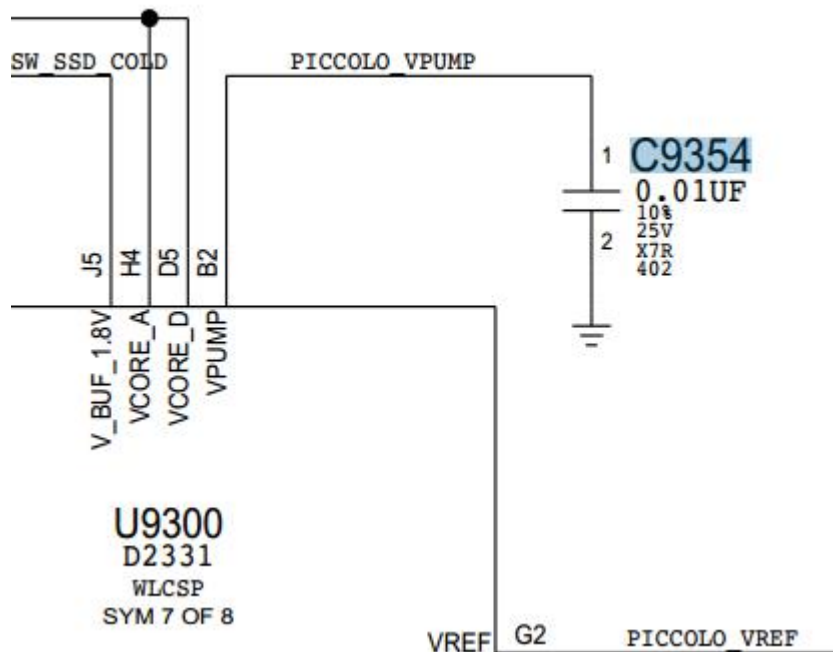


There is a voltage of 1.7v on the test point. When measuring the voltage, it should be noted that if the PCIE bus capacitor is accidentally grounded by the test pen, the CPU will burn. When the voltage is normal, check the reset, turn on, clock signal:



When the above working conditions are normal, there will be voltage,

If the power supply, startup, clock and reset are all normal after the u9300 chip is replaced, or there is no output voltage, measure the output voltage with an oscilloscope and look at the waveform. Some of the voltage is short circuited at the moment when it comes out. Rule out whether the voltage is abnormal due to the short circuit of the main control chip, hard disk and subsequent load circuit.



The main control chip is naturally damaged (common problem). To replace the main control chip, you only need to replace the main control chip of the same brand. 256gb / 512gb can be replaced at will.

Since the 2016 model, there has been no unrecognized hard disk caused by CPU damage.

BIOS will also cause hard disk to be unrecognized. There are many BIOS versions. Wrong BIOS version will also cause hard disk to be unrecognized,

Of course, the poor quality of PCB layer will also lead to the failure to recognize the hard disk, which is rare.

2016 100% reserved data:

Please refer to other repair materials

Web site: www.sitake.com WhatsApp: +86 18627713849
